



Smithsonian
National Museum of the American Indian



Designing the Circle of Care at the National Museum of the American Indian

NATIONAL MUSEUM OF
THE AMERICAN INDIAN

NARA 20th Annual Preservation Conference
“Beyond the Numbers: Specifying and Achieving an
Efficient Preservation Environment”

16 March 2006

Gail Joice and Emily Kaplan

Museum of the American Indian Founded by George Gustav Heye, 1916





**Museum of the American Indian/
Heye Foundation
Broadway at 155th St, NYC.
1922 - 1994**



1960



1992

**Research Branch
Bronx, NY
1926-2005**







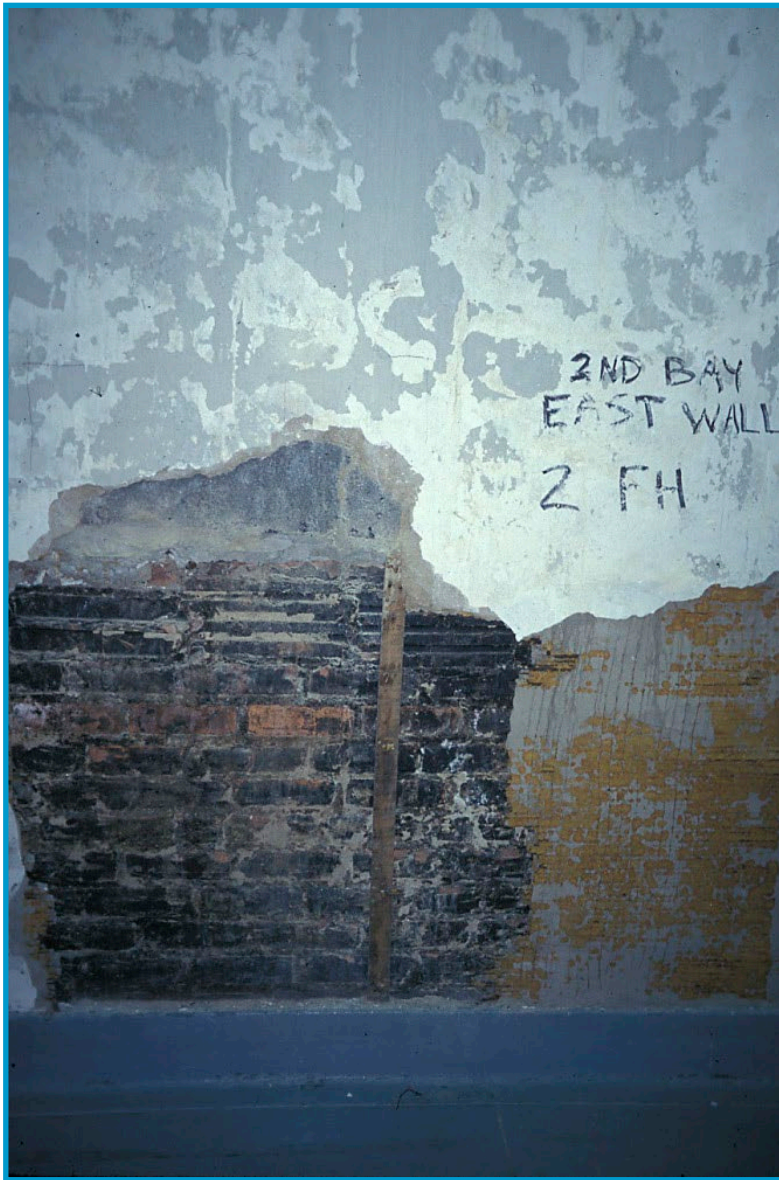
**George Gustav Heye Center
U.S. Customs House,
Lower Manhattan
Opened 1994**



Upgrades at the Research Branch



Deteriorating conditions at the Research Branch



**Cultural Resources Center
Suitland, MD
opened 1999**



CRC collections storage





Conservation labs and loading dock





Collections move



Roll-up doors in collections storage



Loading docks



Research Branch



Cultural Resources Center



NMAI Mall Museum opened September 21, 2004





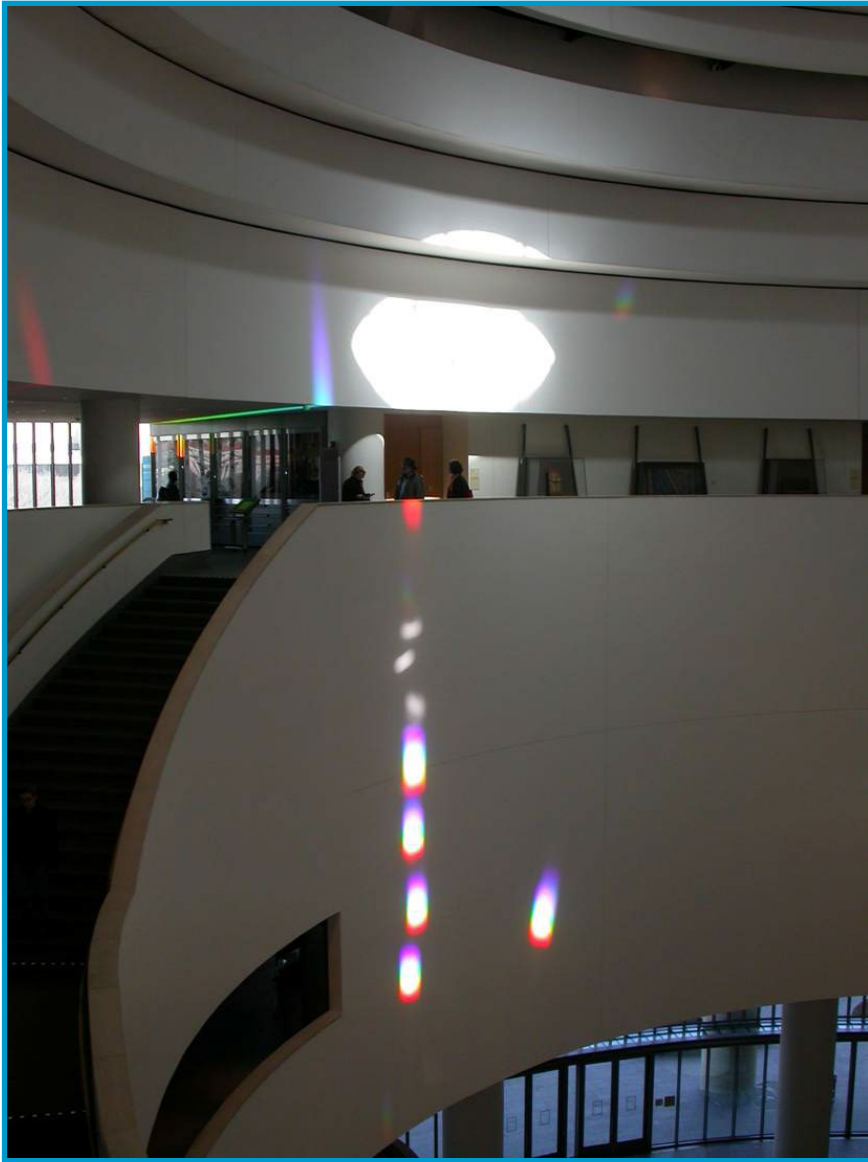
Potomac atrium



Climate



Light from prisms and oculus



Sculpture in the Potomac

Exhibit cases in non-gallery spaces



Special Exhibition Gallery



Filters



Air quality in exhibit cases



Radiotelemetry sensors in exhibit cases



Managing data

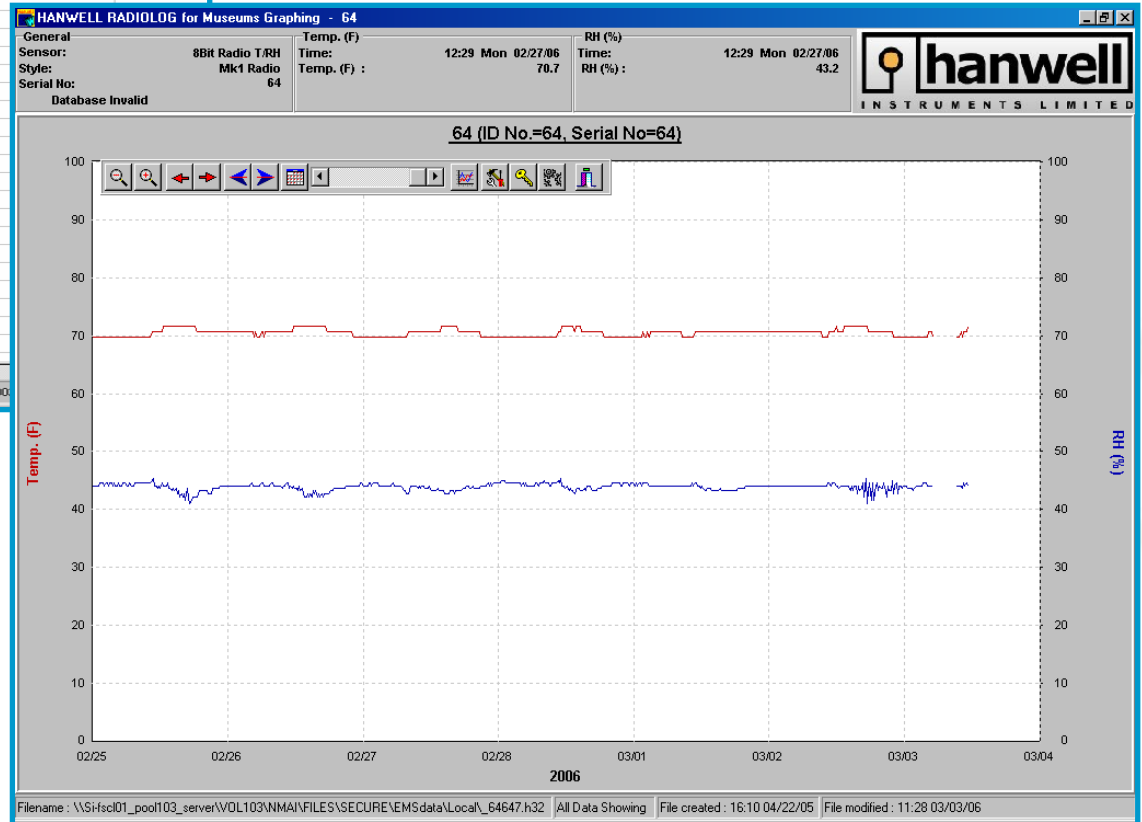
HANWELL RADIOLOG for Museums

File Edit Logs Mode System Help

03/03/06 11:30

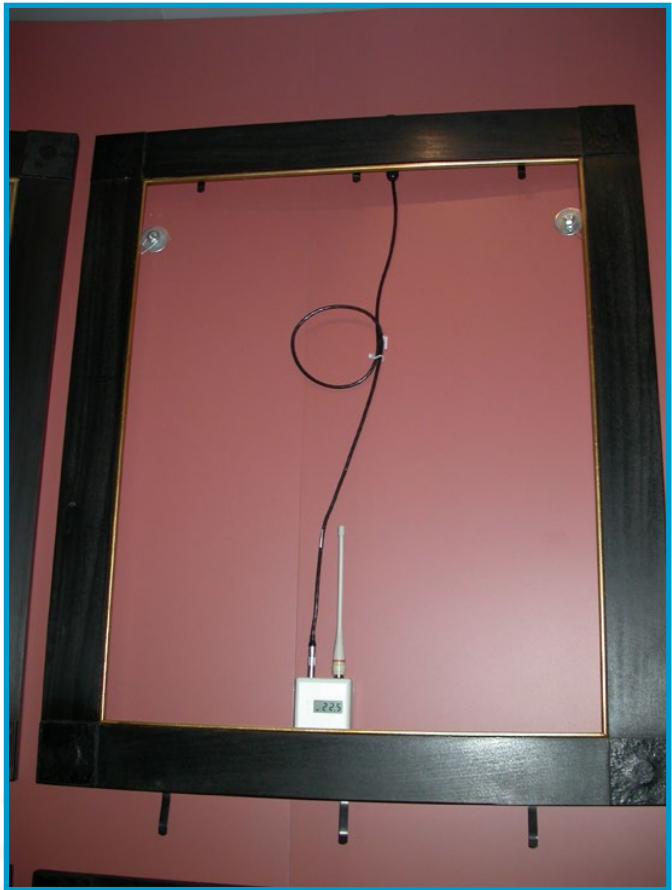
| No. | Name | Status | Type | Temp. (F) | RH (%) |
|-----|------|--------|--------------------|-----------|--------|
| 64 | 64 | 🟢 | Temp. (F) / RH (%) | 71.6 | 44.1 |
| 65 | 65 | 🟢 | Temp. (F) / RH (%) | 70.7 | 42.7 |
| 66 | 66 | 🔴 | Temp. (F) / RH (%) | N/A | N/A |
| 67 | 67 | 🟢 | Temp. (F) / RH (%) | | |
| 68 | 68 | 🟢 | Temp. (F) / RH (%) | 70.7 | 44.1 |
| 69 | 69 | 🟢 | Temp. (F) / RH (%) | 69.8 | 42.2 |
| 70 | 70 | 🟢 | Temp. (F) / RH (%) | 71.6 | 42.2 |
| 71 | 71 | 🟢 | Temp. (F) / RH (%) | 69.8 | 42.7 |
| 72 | 72 | 🟢 | Temp. (F) / RH (%) | | |
| 73 | 73 | 🟢 | Temp. (F) / RH (%) | 67.1 | |
| 74 | 74 | 🟢 | Temp. (F) / RH (%) | 71.6 | |
| 75 | 75 | 🔴 | Temp. (F) / RH (%) | 67.1 | |
| 76 | 76 | 🟢 | Temp. (F) / RH (%) | | |
| 77 | 77 | 🟢 | Temp. (F) / RH (%) | 69.8 | |
| 78 | 78 | 🟢 | Temp. (F) / RH (%) | 70.7 | |
| 79 | 79 | 🟢 | Temp. (F) / RH (%) | 71.6 | |
| 80 | 80 | 🟢 | Temp. (F) / RH (%) | 70.7 | |
| 81 | 81 | 🟢 | Temp. (F) / RH (%) | 70.7 | |
| 82 | 82 | 🟢 | Temp. (F) / RH (%) | 70.7 | |
| 83 | 83 | 🟢 | Temp. (F) / RH (%) | | |
| 84 | 84 | 🟢 | Temp. (F) / RH (%) | 71.6 | |
| 85 | 85 | 🔴 | Temp. (F) / RH (%) | N/A | |
| 86 | 86 | 🟢 | Temp. (F) / RH (%) | 71.6 | |
| 87 | 87 | 🟢 | Temp. (F) / RH (%) | 71.6 | |
| 90 | 90 | | | | |
| 91 | 91 | 🟢 | | 69.8 | |
| 92 | 92 | | | | |
| 93 | 93 | | | | |
| 04 | 04 | | | | |

\\All Stations\Third\Fourth\Lab/
 \\S:\sc101_pool103_server\VOL103\NMAI\FILES\SECURE\EMSDATA\Local\mail4.lyf | 8Bit Radio T/RH Location=00





Datalogger with probe next to plasma screen





“Listening to Our Ancestors”

Acknowledgements

- Scott Merritt - GGHC Assistant Director for Operations
- Marian Kaminitz - CRC, Head of Conservation
- Duane Blue Spruce - GGHC, Facility Planning Coordinator
- Patricia Nietfeld - CRC, Supervisory Collections Manager
- David Jones - Office of Facilities, Engineering and Operations
- Charlie Beggs - Office of Facilities, Engineering and Operations
- Jeff Ridgeway - Mall Building Manager
- John Standish - CRC Facilities Manager
- Bill Kline - Smithgroup
- Steven Weintraub - Art Preservation Services

